

LASVIT  
LATERNA  
MAGICA/  
**EUROLUCE**  
**4-9 / 4 / 2017**

**New Releases &  
Anniversary Selection**

LASVIT  
LATERNA  
MAGICA/



The Laterna Magica exhibition builds on the mutual relation between objects, light and space, while looking at glass from an architect's point of view. The name is derived from an early type of image-projector developed in the 17th century. That device used hand-painted sheets of glass, a lens and a bright light-source to project images. Using video mapping, Lasvit simulates this principle through glass objects and light to tell the unique stories of artistic visions revealed through glass.

New collections designed by  
Zaha Hadid Design  
Kengo Kuma  
Yabu Pushelberg  
Ed Ng & Terence Ngan

The exquisite selection of Lasvit lights collection portfolio, developed together with world-renowned designers, legends of Czech glass design and contemporary Czech designers.

# NEW RELEASES

Duna by Zaha Hadid Design — 6

Eve by Zaha Hadid Design — 8

Yakisugi by Kengo Kuma — 12

Cipher by Yabu Pushelberg — 18

Flux by Ed Ng & Terence Ngan — 24



# DUNA

by Zaha Hadid Design

— Duna was inspired by the coherent yet abstract logic of dune formations that defy traditional Cartesian geometries. Its design concept is realized in a three-dimensional, asymmetrical, pair of intersecting glass forms. The striated surface of the crystal glass produces ever-changing effects of reflection and refraction. Narrowly directed light sources beam light through the mass of glass into the entire glass element, highlighting its geometry.

Pendant Chandelier  
Dimensions / Dia 205 x H 624 x OH max. 2000 mm  
Light Source / 8 x LED 3W  
Weight / 10 kg  
Primary Material / Hand-Blown Glass  
Color / Clear



# EVE

by Zaha Hadid Design

— Composed of fifteen glass pieces arranged in one intriguing ensemble, Eve is chandelier that combines traditional glassmaking techniques with parametric design. Informed by Hadid's renowned design language, the composition is fluid and organic, accentuating differences between clear and smoke elements.

Suspended at varying heights, the glass bodies gracefully float in space and create an impressive play of light and shadow. Its sculptural qualities, notable in daylight, open to new dimensions in the evening.

Chandelier  
Dimensions / Dia 500 × H 750 × OH max. 1900 mm  
Light Source / 1 × 17W, 10 × LED 9W  
Weight / 32 kg  
Primary Material / Hand-Blown Glass  
Color / Clear, Smoke







# YAKISUGI

by Kengo Kuma

— The Yakisugi collection is inspired by the ancient Japanese technique for preserving construction timber by charring its surface. Kengo Kuma explains *“The idea behind Yakisugi collection is about questioning the materiality of glass and natural wooden texture. My intention was to plumb the depth of wooden soul, captured inside the glass.”*

Using dry wood in place of traditional pre-soaked molds, the wood is charred by molten glass. That leaves a permanent imprint of its scorched texture on the glass surface, making each piece an authentic original. This slight modification to a centuries-old technique produced a modern and minimalistic collection that combines simple geometric forms with unusual organic textures.

Pendant Chandelier Small 5 pieces  
Dimensions / W 560 × H 330 + L mm  
Light Source / LED, Warm White, 110W  
Weight / 15 kg

Pendant Chandelier Large 3 Pieces  
Dimensions / Dia 270 × H 500 + L mm  
Light Source / LED, Warm White, 120W  
Weight / 25 kg

Single Pendant Small  
Dimensions / H 330 × W 90 × 90 + L mm  
Light Source / LED, Warm White 20W  
Weight / 3 kg

Single Pendant Large  
Dimensions / H 500 × W 130 × 130 + L mm  
Light Source / LED, Warm White 40W  
Weight / 8.5 kg

Primary Material / Hand-Blown Glass  
Color / Clear











# CIPHER

by Yabu Pushelberg

— The Cipher collection for Lasvit is a juxtaposition of heritage techniques and modern form. Inspired by the versatility and texture of surface-patterning and the way in which it catches light, the delicate hand-blown crystal cylindrical pieces are cut with clean, clear lines. With components arranged in series and joined by polished champagne-gold finished connections that emit light, Cipher's overall linear form creates a poetic visual rhythm.

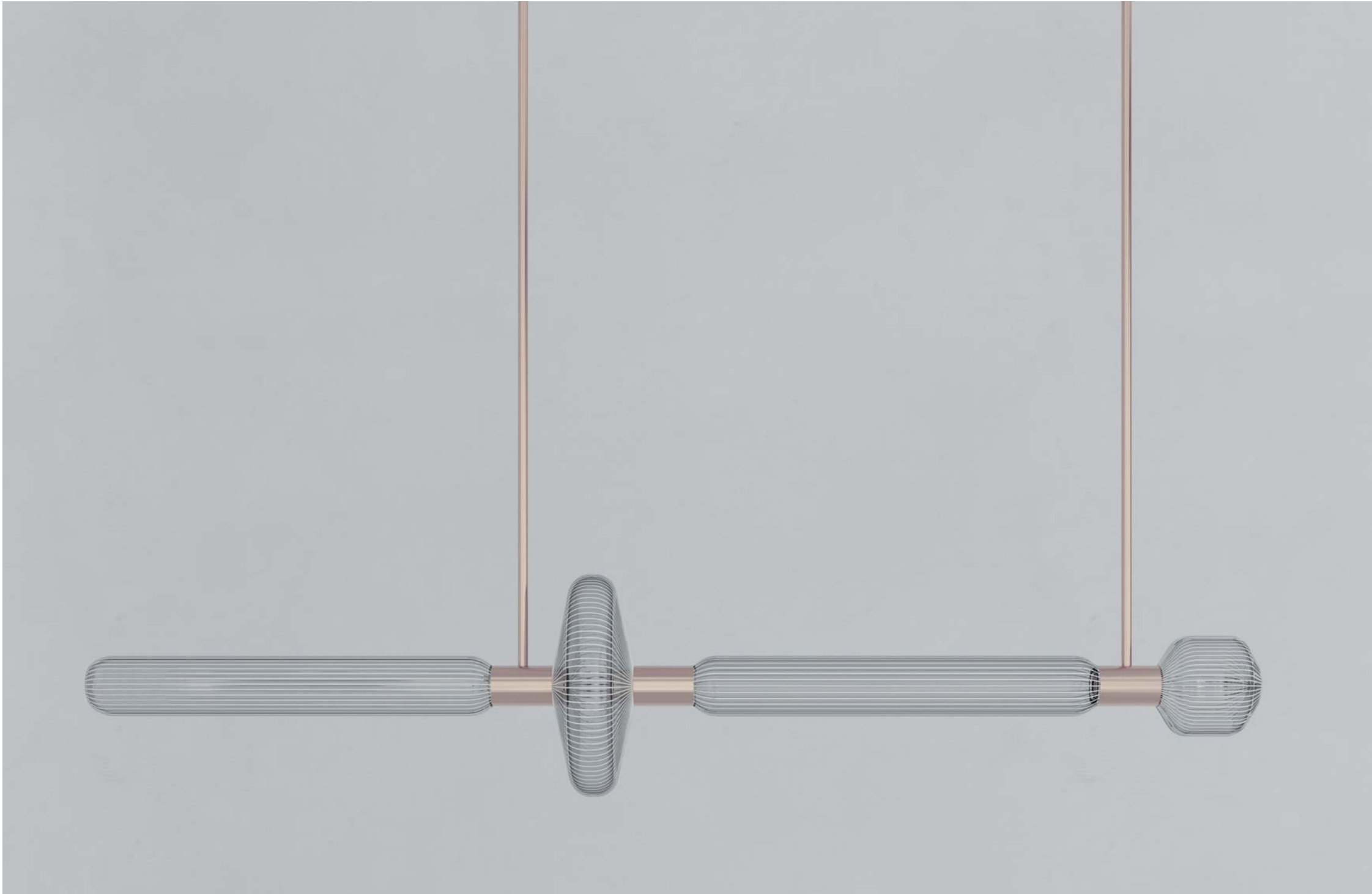
Regardless of the configuration, there exists an inherent simplicity and earnestness in the effect of light playing off these delicate, perfectly clear etched glass cylinders.

Pendant Vertical  
Dimensions / Dia 217 × OH 2000 mm  
Light Source / 5 × LED 8W  
Weight / 4.2 kg

Pendant Horizontal 1  
Dimensions / Dia 512 × L1208 × OH 2000 mm  
Light Source / 6 × LED 8W  
Weight / 2 kg

Pendant Horizontal 2  
Dimensions / Dia 97 × L 1590 × OH 2000 mm  
Light Source / 4 × LED 8W  
Weight / 2.5 kg

Primary Material / Hand-Blown Glass  
Color / Clear









# FLUX

by Ed Ng & Terence Ngan

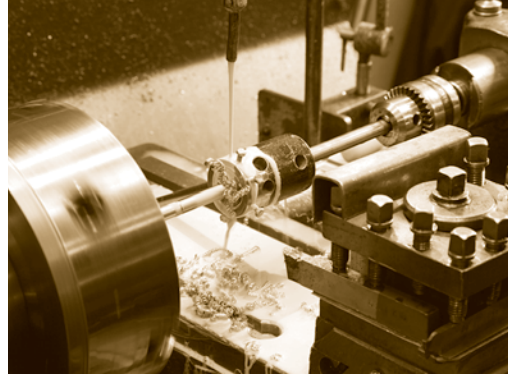
— The Flux collection was inspired by light reflecting off the ocean in shallow water and the traces left by the receding tide. Each lamp is hand-blown using a metal mold to provide its unique appearance. The clear top meets with inner and outer hand-painted gold and platinum layers, referencing the decoration of traditional Asian ceramics. Its organic lines trap and refract light between the layers to create a deep radiance and the impression of water in motion.

Floor Lamp  
 Dimensions / Dia 760 × H 1000 mm  
 Light Source / LED 35W  
 Weight / 12 kg  
 Primary Material / Hand-Blown Glass  
 Color / Clear, Gold, Platinum

Table Lamp  
 Dimensions / L 280 × W 142 × H 390 mm  
 Light Source / LED 35W  
 Weight / 10 kg  
 Primary Material / Hand-Blown Glass  
 Color / Clear, Gold, Platinum







# ANNIVERSARY SELECTION

- Neverending Glory by Jan Plechac & Henry Wielgus — 32  
Crystal Rock by Arik Levy — 40  
Spin by Lucie Koldova — 44  
“And Why Not!” by Rene Roubicek — 48  
Praha by Stanislav Libensky — 50  
Frozen by Maxim Velcovsky — 52  
Lollipop by Boris Klimek — 56  
TAC/TILE by Andre Fu Living — 58  
FACET by Moritz Waldemeyer — 62  
Fungo by Campana Brothers — 64  
Empress by Jakub Berdych — 66  
Ludwig by Maurizio Galante — 72





# NEVERENDING GLORY

by Jan Plechac & Henry Wielgus

— The Neverending Glory collection reflects nostalgic emotions and interprets opulent candle chandeliers in new way to symbolize prime moments of appreciation and glory.

In individual silhouettes, it is possible to recognize iconic chandeliers from five of the world's most eminent concert halls and theaters; La Scala in Milan, Palais Garnier in Paris, the Metropolitan Opera in New York, the Bolshoi Theater in Moscow, as well as the Czech Republic's Estates Theater in Prague.

Prague Estates Theatre  
Dimensions / Dia 440 × H 730 mm

Palais Garnier  
Dimensions / Dia 510 × H 555 mm

Bolshoi Theatre  
Dimensions / Dia 550 × H 780 mm

La Scala  
Dimensions / Dia 550 × H 600 mm

Metropolitan Opera  
Dimensions / Dia 550 × H 410 mm

Weight / 10 kg  
Primary Material / Hand-Blown Glass  
Light Source / 1 × E27 White Globe max. 40 W  
Color / Clear, Opal, Iridescent or Smoke

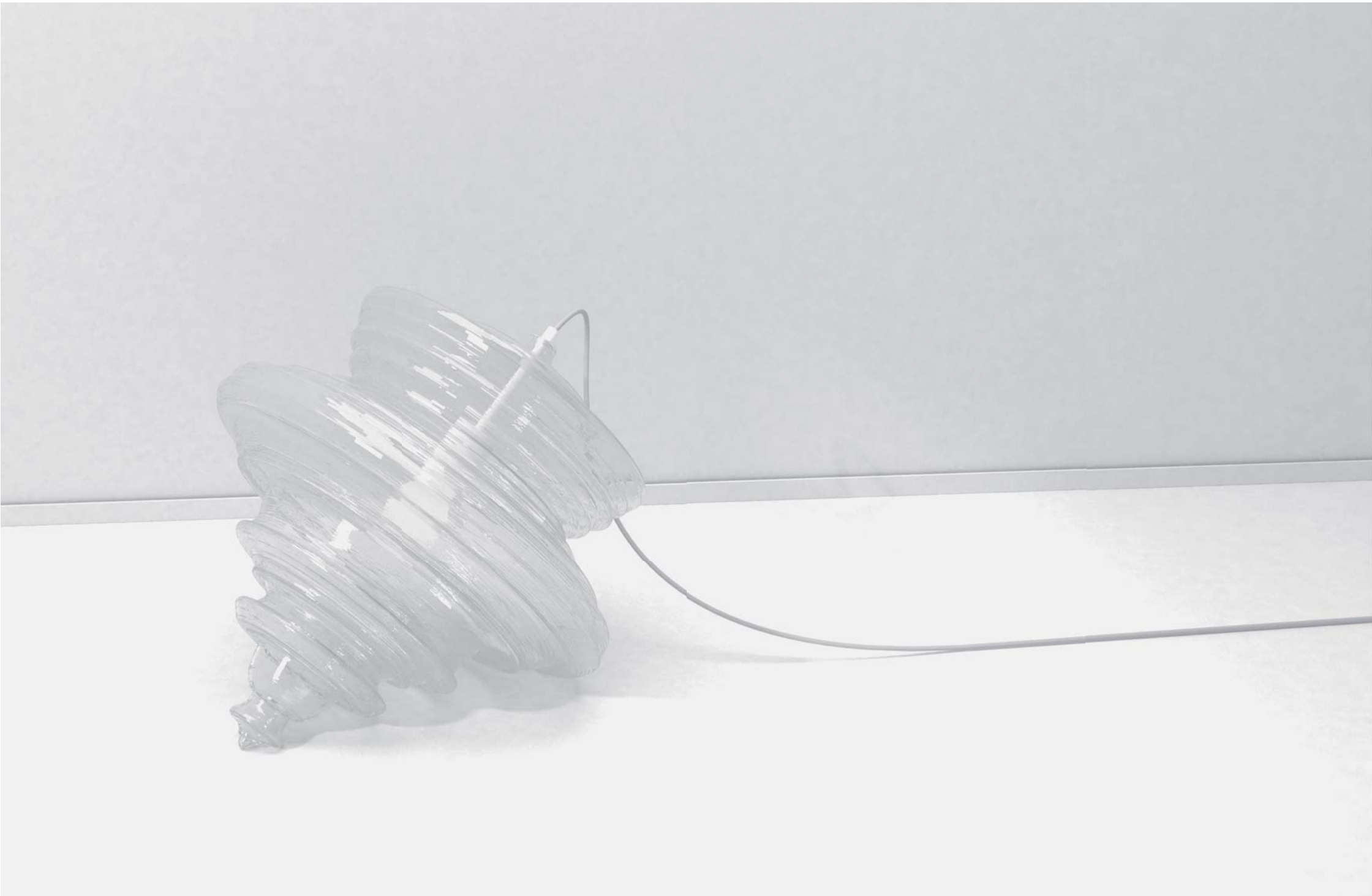


Wall Sconce  
 Dimensions / Dia 570 × H 220 mm  
 Light Source / 1x E27, 40W  
 Weight / max.11 kg

Table Lamp  
 Dimensions / Dia 280 × H 260 mm  
 Light Source / E 14 max. 40W  
 Weight / 6 kg

Floor Lamp  
 Dimensions / Dia 450 × H 500 mm  
 Light Source / 1x E27, 40W  
 Weight / max.10 kg  
 Color / Clear

Primary Material / Hand-Blown Glass  
 Color / Clear, Opal









# CRYSTAL ROCK

by Arik Levy

— Crystal Rock is created with a perfectly cut, yet roughly sculpted contemporary silex that highlights the interaction between light and darkness, suspended in the air like a frozen shooting star. The world stands still the moment you gaze upon it, its multiple reflections and deflections fascinating during the day and even more dynamic at night. Following the success of his Crystal Rock pendant lights, Arik Levy extended this versatile design line with the Crystal Rock vases.

Crystal Rock Single  
Dimensions / Dia 130 × H 185 + L mm  
Weight / 3 kg

Crystal Rock 3  
Dimensions / Dia 281 × H 180 + L mm  
Weight / 9 kg

Crystal Rock 5  
Dimensions / Dia 364 × H 180 + L mm  
Weight / 15 kg

Vase L  
Dimensions / Dia 230 × H 320 mm  
Weight / 2,3 kg

Vase S  
Dimensions / Dia 130 × H 175 mm  
Weight / 1,1 kg

Light Source / G4 LED 12V 3W  
Color / Amber, Blue, Clear, Opal or Red  
– Any Color Combination Available





# SPIN

by Lucie Koldova

— Small and large transparent pendants multiplied. Spin light's expression of dynamics is based on a simple rotational form known as the spinning top. It gives the lights a basic graphic impression.

Clear transparent airy lamps with a touch of color on top are powered by small LED efficient discs, which highlight strong silhouettes to float freely in the space as empty volumes.

Pendant Small  
 Dimensions / Dia 332 × H 288 × OH 2500 mm  
 Light Source / 1 × E27 7W  
 Weight / 4 kg

Pendant Medium  
 Dimensions / Dia 383 × H 318 × OH 2500 mm  
 Light Source / 1 × E27 7W  
 Weight / 5 kg

Pendant Large  
 Dimensions / Dia 430 × H 405 × OH 2500 mm  
 Light Source / 1 × E27 7W  
 Weight / 6 kg

Wall Sconce, Ceiling Fixture Small  
 Dimensions / Dia 332 × H 185 mm  
 Light Source / 1 × GX53 7W  
 Weight / 4 kg

Wall Sconce, Ceiling Fixture Large  
 Dimensions / Dia 383 × H 172 mm  
 Light Source / 1 × GX53 7W  
 Weight / 5 kg

Primary Material / Hand-Blown Glass  
 Color / Clear  
 Metal Variations / Black Matt, White  
 Glossy, Nickel Plated, Polished Brass,  
 Copper Red Plated







# “AND WHY NOT!”

by Rene Roubicek

— Chandelier designed for Lasvit named by its author “And Why Not!” refers to his lifelong experimentation and search for compositions and forms imprinted in glass.

The chandelier’s emotionally intense sculptural form resembles a flash and is an evolution of Roubicek’s core designs based on dynamic abstraction. Light gliding on large smoothly polished surfaces while absorbed by the mass of the glass creates a unique atmosphere.

Dimensions / Dia 1200 × H 1700 mm  
Light Source / 7 × G4 Halogen max. 25 W  
Weight / 30 kg  
Primary Material / Hand-Blown Glass  
Color / Clear





# PRAHA

by Stanislav Libensky

— Lasvit is proud to present lighting sculpture by Stanislav Libensky – a set of original pendants designed for and installed in the Hotel Praha, a prominent architectural project completed during the 1980's. Although presenting the best of contemporary design, the hotel was later torn down on the premise of being “too large to operate.” Civic efforts to preserve it as a cultural monument failed and these lights are among the few remaining artifacts. Libensky used varying thicknesses of glass to create a play of rays and shadows on the fixtures themselves as well as the surrounding interiors. Natural light creates a positive/negative image pattern directly on the glass. Amassing fixtures in a variety of shapes and heights enables diverse effects from a fireball look to more delicate forms resembling a kaleidoscope. These distinctive features, as well as variability of use, make the Praha lighting sculpture a timeless design.

Praha 1 Short  
Dimensions / Dia 187 × H 1491 mm  
Light Source / 1 × E27  
Weight / 6 kg

Praha 1 Long  
Dimensions / Dia 187 × H 1012 mm  
Light Source / 1 × E27  
Weight / 9 kg

Praha 3 Long  
Dimensions / Dia 460 × H 1520 mm  
Light Source / 3 × E27  
Weight / 30 kg

Praha 7 Long  
Dimensions / Dia 700 × H 1550 mm  
Light Source / 7 × E27  
Weight / 51 kg

Praha 22  
Dimensions / Dia 1200 × H 2100 mm  
Light Source / 22 × E27  
Weight / 250 kg

Praha 3 Short  
Dimensions / Dia 460 × H 1040 mm  
Light Source / 3 × E27  
Weight / 25 kg

Praha 7 Short  
Dimensions / Dia 700 × H 1070 mm  
Light Source / 7 × E27  
Weight / 45 kg

Praha Exhibition Custom Made Piece  
Dimensions / Dia 3200 × H 2260 mm  
Light Source / 101 × E27, 40W  
Weight / 958 kg

Primary Material / Hand-Blown Glass  
Color / Clear



# FROZEN

by Maxim Velcovsky

— The Frozen collection was inspired by the transformation of water into ice. This moment is similar to work in a glassmaker shop. Velcovsky allows the glass to spill over a metal form and seeks advantage in its natural properties. Each piece traces a unique record of the process, becoming an original.

Velcovsky found inspiration among pieces of ice created by nature and applied that element of randomness in nature to his craft in the context of glassmaking. Glassmakers understand their material always ‘freezes’ at some moment in the process and only the most skilled hands are capable of creating a unique form.

Pendant Small  
Dimensions / Dia 230 × H 240 mm  
Weight / 6 kg

Pendant Large  
Dimensions / Dia 263 × H 340 mm  
Weight / 10 kg

Primary Material / Hand-Blown Glass  
Light Source / E14 LED 5W  
Color of Pendants / Clear



Champagne Cooler  
Dimensions / Dia 300 × H 350  
Weight / 10 kg

Bowl Large  
Dimensions / Dia 480 × H 150  
Weight / 13 kg

Bowl Small  
Dimensions / Dia 360 × H 170  
Weight / 7,3 kg

Bowl Baby  
Dimensions / Dia 210 × H 150  
Weight / 2,3 kg

Primary Material / Hand-Blown Glass  
Champagne Cooler Color / Clear  
Bowl Colors / Amber, Smoke, Clear or Uranium Green



# LOLLIPOP

by Boris Klimek

— Designer experimented with the technique of slumped glass, exploring its wide possibilities in terms of glass coloring, glint and internal structure. Made of amorphous glass plates, combined with the metal holder and inserted light source, the resulting objects are reminiscent of lollipops. The Lollipop collection consists of table and stand-alone lamps, as well as pendant lights.

Pendant A  
Dimensions / Dia 455 × H 830 + L max  
5000 mm  
Weight / 12 kg

Pendant B  
Dimensions / Dia 490 × H 735 + L max  
5000 mm  
Weight / 10 kg

Pendant C  
Dimensions / Dia 650 × H 730 + L max  
5000 mm  
Weight / 10 kg

Pendant D  
Dimensions / Dia 400 × H 660 + L max  
5000 mm  
Weight / 8 kg

Floor Lamp BF  
Dimensions / Dia 490 × H 1470 mm  
Weight / 15 kg

Floor Lamp AF  
Dimensions / Dia 450 × H 1240 mm  
Weight / 15 kg

Table Lamp DF  
Dimensions / Dia 335 × H 620 mm  
Weight / 8 kg

Table Lamp BF  
Dimensions / Dia 490 × H 540 mm  
Weight / 7 kg

Light Source / G9 LED 7W  
Primary Material / Fused Glass  
Colors / Light Pink, Orange, Clear, Light  
Brown, Turquoise, Amber or Light Blue



# TAC/TILE

by Andre Fu Living

— Celebrating Fu's signature language of 'relaxed luxury,' this collection is an ode to a truly tactile material that embodies religious, institutional and monumental architecture.

TAC/TILE was inspired by the 1932 Maison de Verre (a.k.a. House of Glass), Czech metropolitan passageways, traditional Chinese tiled roofs, the Flatiron Building, as well as modernist glass blocks. The purist triangular profile became the core form adapted into a spectrum of applications - from table lamps and floor lamps to suspended pendants.

Pendant Chandelier Vertical  
Dimensions / W 305 × H 216 + OH 1200 mm  
Light Source / LED T8 10W  
Weight / 23 kg

Pendant Chandelier Horizontal  
Dimensions / W 986 × H 216 + OH 1340 mm  
Light Source / LED T8 14W  
Weight / 18 kg

Floor Lamp Vertical  
Dimensions / W 330 × H 256 × H 1218 mm  
Light Source / LED Light Source, 40W  
Weight / 36 kg

Table Lamp Vertical  
Dimensions / W 330 × H 256 × H 676 mm  
Light Source / LED light source, 40W  
Weight / 23 kg

Table Lamp Horizontal  
Dimensions / W 346 × H 190 × H 388 mm  
Light Source / LED 20W  
Weight / 11 kg

Primary Material / Fused glass  
Color / Clear









# FACET

by Moritz Waldemeyer

— As if trying to systematize the chandelier-making tradition, Moritz Waldemeyer took the geometrical shape of the Classic chandelier outline and turned it into a diamond-like hexagonal glass unit.

On its own with just a single pendant, or in combination of multiple items into a large chandelier, the FACET components stand out as clear, disciplined and geometric. The light source included inside every pendant allows the FACET to be universal and almost unlimitedly extendable.

Pendant Set of 19  
 Dimensions / Dia 895 × W 830 × OH 1000 mm  
 Weight / 27 kg

Pendant Set of 37  
 Dimensions / Dia 1225 × W 1105 × OH 1150 mm  
 Weight / 52 kg

Pendant Set of 7  
 Dimensions / Dia 539 × W 518 × OH 800 mm  
 Weight / 11 kg

Light Source / LED 3W  
 Primary Material / Hand-Blown Glass  
 Color / Clear



# FUNGO

by Campana Brothers

— The Fungo chandelier was inspired by the fascinating shape of a mushroom growing on wood. Yet this mushroom didn't grow in the forest, but was discovered in the basement of Lasvit's glassworks, where an ancient wooden glassblowing mold had succumbed to the ravages of humidity.

The Campana Brothers chose to blend this newfound accidental theme with Lasvit's glassmaking tradition and fuse their techniques with natural materials. The resulting artwork displays a striking contrast between the formal rigidity of the chandelier's wooden structure and the blown-glass that appears to emerge spontaneously from the wood.

Pendant Chandelier Small  
 Dimensions / Dia 1210 × H 900 + L mm  
 Light Source / LED 20W  
 Weight / 30 kg

Pendant Chandelier Large  
 Dimensions / Dia 1700 × H 1250 + L mm  
 Light Source / LED 84W  
 Weight / 90 kg

Primary Material / Hand-Blown Glass  
 with Walnut or Ash Wood  
 Glass Color / Clear



# EMPRESS

by Jakub Berdych

— Inspired by the traditional shape of chandeliers popular during the reign of Empress Maria Theresa, this contemporary reflection on the iconic style opens itself to refreshing new details. Its individual trimmings are withheld prior to final cutting and polishing, allowing the pressed glass to include its overburden edge.

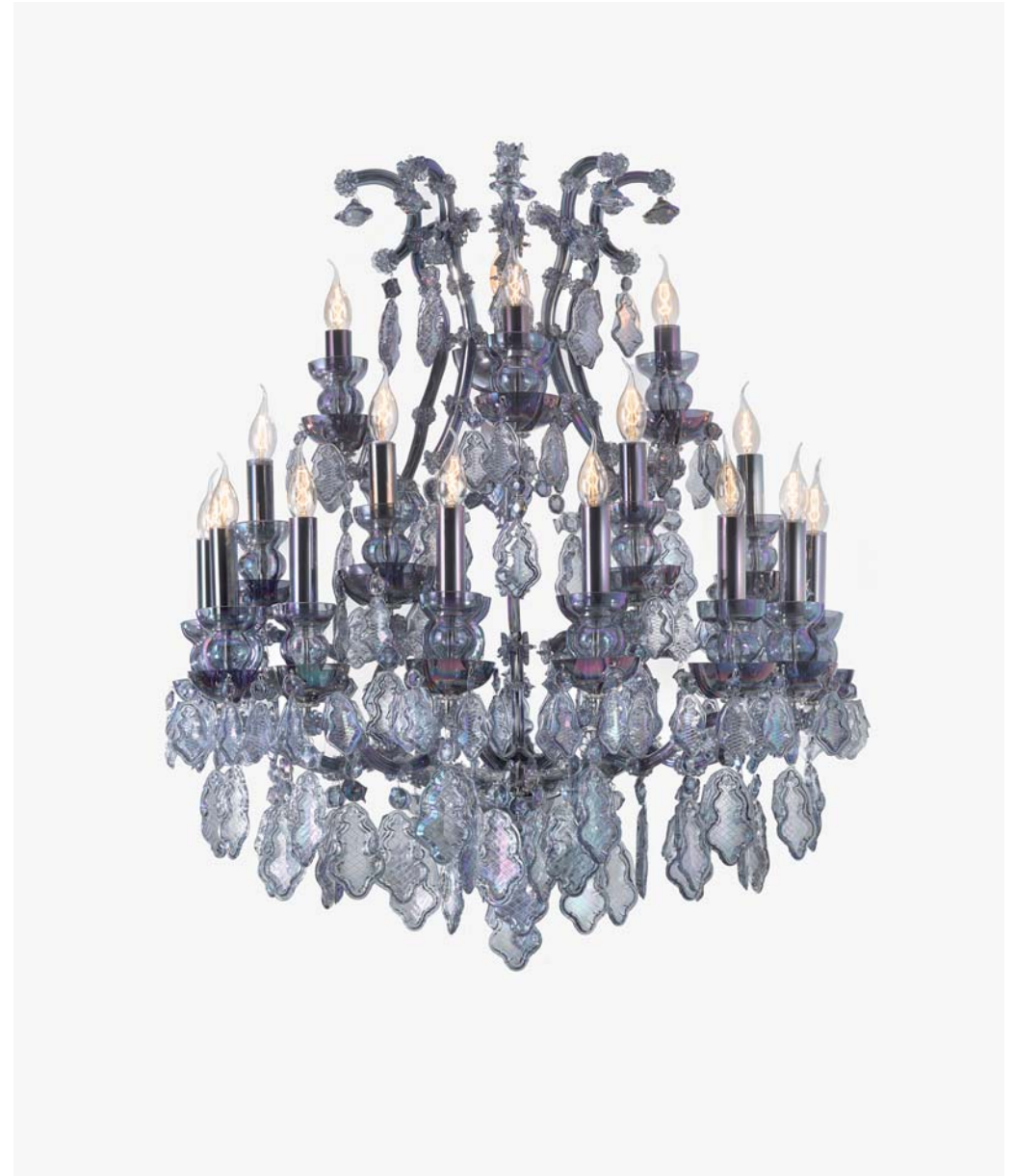
This effect captures the sense of glass being exposed to heat and pressure, sustaining a sense of motion. The impression is further enhanced by using the technique of metal-coating of glass that adds depth, sheen and iridescence. The Empress chandelier is an example of excellent craftsmanship combined with the raw sense of the unfinished trimming.

Chandelier Large  
Dimensions / Dia 1320 × H 1940 mm  
Light Source / 48 × E14 + 1 × E27 40W  
Weight / 170 kg

Chandelier Small  
Dimensions / Dia 790 × H 1250 mm  
Light Source / 15 × E14 + 1 × E27 40W  
Weight / 25 kg

Primary Material / Pressed Glass  
Color / Copper or Dark-Violet Soft  
Coating on Clear Glass





Chandelier Low  
Dimensions / Dia 850 x H 700 x  
OH max. 1100 mm  
Light Source / 12 x E 14, 1 x E27, total 520W  
Weight / 27 kg

Wall Sconce  
Dimensions / Dia 870 x H 900 mm  
Light Source / 16 x E 14, total 640W  
Weight / 30 kg

Primary Material / Pressed Glass  
Color / Copper or Dark-Violet Soft  
Coating on Clear Glass



Floor Lamp  
 Dimensions / Dia 750 × H 1550 mm  
 Light Source / 11 × E 14, total 440W  
 Weight / 25 kg



Table Lamp  
 Dimensions / Dia 600 × H 900 mm  
 Light Source / 13 × E 14, total 520W  
 Weight / 10 kg

Primary Material / Pressed Glass  
 Color / Copper or Dark-Violet Soft  
 Coating on Clear Glass





# LUDWIG

by Maurizio Galante

— The Ludwig collection strives to establish balance between past and future. The bygone romantic era with its neoclassical proportions is reinterpreted with essentially slick, streamlined forms.

While the contours remain loyal to their neoclassical style chandelier references, the use of industrial glass tubes imbues this family of spectacular lights with an airy and strikingly modern elegance.

Chandelier Large  
Dimensions / Dia 1364 x H 1306 x OH mm  
Light Source / 165 x LED G9, 495W  
Weight / 250 kg

Chandelier Small  
Dimensions / Dia 880 x H 800 x OH 1600 mm  
Light Source / 51 x LED G9, 153W  
Weight / 120 kg

Primary Material / Technical Clear Glass  
Color / Clear

## ZAHA HADID DESIGN

As an architect and designer, Zaha Hadid's work explored spatial concepts at all scales from the city to individual product – sculptural jewelry and limited edition furniture pieces, homeware items and fashion accessories - as well as interior, exhibition and set design commissions. ZHD was established in 2006 under the direction of Woody Yao and Maha Kutay to implement the latest technological and material innovations in collaboration with the world's most respected brands. ZHD also features a gallery space arranged over two floors which hosts an ever-changing program of exhibitions and collaborations. The ZHD Gallery regularly showcases work by emerging designers, young artists and innovative fabricators, as well as hosting a variety of collateral events.

## KENGO KUMA

Kengo Kuma is a renowned Japanese architect and professor at the University of Tokyo Graduate School of Architecture. He established Kengo Kuma & Associates in 1990 after earning his degree at the University of Tokyo in 1979 and studying further at Columbia University as a Visiting Scholar. His architectural office completed a series of highly acclaimed and award-winning projects both in Japan and abroad. Currently, about 100 projects are underway in Asia, Europe and the USA, including the new National Stadium in Japan. Renowned as a prolific writer, his widely read books are published in English, Chinese and Korean. His collaboration with Lasvit extends a design philosophy that encompasses architecture, furniture design and now glassworks.

## YABU PUSHELBERG

Founded in 1980 by George Yabu and Glenn Pushelberg, the Yabu Pushelberg design firm is now one of the most recognized design firms worldwide. The firm's multidisciplinary approach is informed by its endless curiosity and driven by thoughtful, creative and like-minded partnerships. Recognized as design industry innovators, the firm earned countless accolades for their work and contribution to international design excellence, including appointment as Officers for the Order of Canada. With studios in Toronto and New York and current projects in sixteen countries, attention to detail and a spirit of exploration remains a hallmark of the firm. The Lasvit collection was developed following their successful collaboration on oversized diamond-like chandeliers for the Four Seasons Kuwait.

## ED NG & TERENCE NGAN

In the two decades since Ed Ng and Terence Ngan founded AB Concept in Hong Kong, the duo built their practice into an international luxury design powerhouse. Renowned for their sensual, multi-layered style, architectural use of space and meticulous detailing, Ed and Terence draw on a wide range of cultural influences to create exceptional, narrative driven interiors for some of the world's most beautiful hotels, restaurants clubs and private homes. Their collaborations with Lasvit produced a series of sophisticated, timeless fluid pieces of the highest quality, which balance comfortably between Eastern and Western cultures.

## JAN PLECHAC & HENRY WIELGUS

Jan Plechac and Henry Wielgus met during their studies at AAAD (The Academy of Art, Architecture and Design in Prague) where they first collaborated. After Jan Plechac exhibited his thesis work at Salone Satellite 2011, he gained much attention from gallery owners and well-known manufacturers. In 2012 Jan Plechac and Henry Wielgus founded studio Jan Plechac & Henry Wielgus.

## ARIK LEVY

Arik Levy is an artist, technician, photographer, designer and filmmaker. Levy's skills are multi-disciplinary and his work can be seen in prestigious galleries and museums worldwide. Best known publicly for his sculptures – such as his signature Rock pieces - his installations, limited editions and design, Levy nevertheless feels that „the world is about people, not objects“.

## LUCIE KOLDOVA

Lucie Koldova is a product and furniture designer. She moved to Paris in 2009 and spent a year in Arik Levy's studio. Simultaneously she continued to develop her own creations for various companies. Koldova established her own studio in Paris in 2012. She appreciates influences, inspiration and different cultures melting together in the city where she continues working for international clients.

## RENE ROUBICEK

Rene Roubicek is an icon of Czech glass design. Glass art as an independent discipline was actually born in Czechoslovakia and it was first introduced to the world by Roubicek, over half a century ago. His spatial dimensional abstract compositions combining metal and glass caused a sensation at the 1958 Expo in Brussels. Roubicek subsequently won the Grand Prix Expo award. His work appears in many major galleries worldwide.

## STANISLAV LIBENSKY

Together with his wife and lifelong collaborator, Jaroslava Brychtova, Stanislav Libensky belonged among the pioneers of modern glass. The artistic partnership that lasted nearly 50 years produced some of the most defining cast sculptures and architectural installations of the 20th century. Their monumental works helped elevate glass into a recognized art form, particularly with their Expo '58 installation that won the 1958 Grand Prize in Brussels. Libensky explored the optical and physical aspects of glass from his background as a painter, complementing his wife's sculptural approach. He later developed interesting collaborations with architects, including a stained-glass window for Prague's St. Vitus Cathedral. His extensive teaching career helped form the current generation of glass artists both in the Czech Republic and abroad.

## MAXIM VELCOVSKY

Maxim Velcovsky completed his studies at the Academy of Arts, Architecture and Design in Prague. In 2002 he became co-founder of the Qubus design studio. He participated in over ninety joint exhibitions and his works are included in the collections of the Victoria & Albert Museum in London, The New Pinakothek in Munich, the Museum of Art and Design in Prague and the Design Museum in Lausanne. In 2007 he won the Czech Designer of the Year award. In 2011 Velcovsky became Art Director of Lasvit, while also heading the Ceramics and Porcelain Atelier of the Academy of Arts, Architecture and Design in Prague.

## BORIS KLIMEK

Boris Klimek studied at the Zlin Atelier of the Academy of Arts Architecture and Design in Prague. He received numerous prizes for his work and is currently based in Prague, where he focuses on product and interior design, as well as exhibition displays. His designs entail conceptual overlaps and often carry stories. Klimek's designs aim at both function and beauty – particularly through their poetry, playfulness and ability to spark fantasy and emotion.

## ANDRE FU LIVING

Andre Fu is a Hong Kong based interior designer. He was educated in the United Kingdom and gained international acclaim for his design of The Upperhouse luxury hotel. His boutique studio created a series of internationally-recognized works in sensuous and unique projects. Fu's approach to interior architecture combines the rigorous pursuit of new Asian sensitivities, with clarity in space planning and keen attention to the details of everyday life. His new AFL brand plans to expand into different areas of lifestyle, including a home fragrance.

## MORITZ WALDEMEYER

Moritz Waldemeyer is an internationally renowned designer based in London. His work occupies a diverse range of creative spaces, from art and product design to fashion and entertainment. Studio Moritz Waldemeyer is renowned for its forward thinking and playful experimentation, forging links between technology, art, fashion and design. Waldemeyer's interest in light and its implementation also results in bespoke light-studded costumes for Will.I.AM, Rihanna, Take That and the 2012 London Olympics handover Ceremony performers.

## CAMPANA BROTHERS

The Campana Brothers, Fernando and Humberto are Brazilian designers who teamed up in 1983 to make unique furniture using diverse materials, including recycled products and plush toys. Their work incorporates themes of transformation and reinvention. From 1997, their furniture began to be produced and sold in Italy. In 1998 they became the first Brazilian artists to exhibit their work at The Museum of Modern Art in New York, achieving international recognition. Currently they are represented in galleries in New York, London, Paris and Rome.

## JAKUB BERDYCH

Jakub Berdych is a co-founder of the Qubus Design Studio focusing primarily on conceptual work in traditional Czech materials such as glass and porcelain. His work spans products and comprehensive collections known both locally and abroad, including the reconstruction of interior church St. Bartholomew in Chodovice, installations in the Moss Gallery in New York and London Mint Gallery. In addition to conceptual and product design, Berdych focuses on implementations in the field of interior architecture and fine arts. He is the artistic director of the Gallery Store Dox by Qubus, located in the premises of the contemporary art gallery Dox in Prague and offering a distinct selection of design and applied arts.

## MAURIZIO GALANTE

Maurizio Galante is one of the world's most respected haute couture fashion designers. His distinctive language is particularly valuable in contemporary high fashion and his creations are executed with a profound respect for traditional craftsmanship. They poetically combine an architect's in-depth knowledge with the fine workmanship of the French Haute Couture atelier and the impeccable skills of Italian manufacturing. He first teamed up with Lasvit glassmakers in 2013 to express his artistic visions in glass.

## HEADQUARTERS / NOVY BOR / CZECH REPUBLIC

LASVIT s.r.o.  
Nam. Miru 55 / 473 01 Novy Bor / Czech Republic  
T+420 481 120 810 E lasvit@lasvit.com

---

## FLAGSHIP SHOWROOM / PRAGUE

LASVIT s.r.o.  
Komunardu 32 / Prague 7 / 170 00 / Czech Republic  
T+420 222 362 990 E lasvit@lasvit.com

---

## ATELIER / NEW YORK

LASVIT, Inc.  
51 Wooster Street / Ground Floor / New York / NY 10013 / USA  
T+1 212 219 3043 E america@lasvit.com

---

## ATELIER / DUBAI

LASVIT Middle East FZ-LLC  
P.O. Box 333272 / Dubai Design District / Office A109 / Building 6 /  
Dubai / UAE  
T+971 4453 8689 E me@lasvit.com

---

## SINGAPORE

LASVIT (Singapore) Pte. Ltd.  
75 Neil Road / Singapore 088902 / Singapore  
T+65 6542 9422 E singapore@lasvit.com

---

## HONG KONG

LASVIT (H.K.) Ltd.  
8 Floor / The Hennessy / 256 Hennessy Road / Wanchai /  
Hong Kong S.A.R.  
T+852 2866 1234 E asia@lasvit.com

---

## SHANGHAI

Lasvit (China) Co. Ltd.  
Room 906 / 9F / No. 1728 / West Nanjing  
Rd. / Shanghai / 200040 / China  
T+86 21 22263206 E shanghai@lasvit.com F+86 21 60100599

---

## MUMBAI

LASVIT (India) Pvt. Limited  
Regus / Level-2 / Raheja Centre Point / 294 CST Road /  
Mumbai / India  
T+91 99 53 73 53 48 E india@lasvit.com

---

## LOS ANGELES

LASVIT, Inc.  
28368 Constellation Road / Unit 350 / Valencia / CA 91355 / USA  
T+1 661 294 6507 E america@lasvit.com

---

## MOSCOW

LASVIT (Russia)  
2 Tverskaya-Yamskaya str. 31/35 / office 611 / Moscow 125047 /  
Russian Federation  
T+7 965 2166716 E russia@lasvit.com

---

## LONDON

LASVIT (UK) Limited  
7 Tilney Court / Old Street / London EC1V 9BQ / United Kingdom  
T+44 20 7490 2004 E uk@lasvit.com

---

## PARIS

LASVIT (FR)  
10 rue Saint-Augustin / 75002 Paris / France  
T+33 (0) 7 50 90 78 04 E france@lasvit.com

---

## ASTANA

LASVIT Representative Office in Central Asia Region  
Kunaev Str. 12/1 / Office 115 / Astana 010000 / Kazakhstan  
T+7 776 774 9669 E kazakhstan@lasvit.com

---

Lasvit, founded in 2007 by Leon Jakimic, is a cutting-edge Czech based manufacturer of unique works of glass. In a mere ten years, Lasvit established itself as the authority delivering bespoke lighting installations, glass sculptures, lights and glassware collections as well as unique architectural glass elements. Honoring the craft, Lasvit combines the authenticity of glass with innovative ideas, all while cultivating the millennium-length tradition of Bohemian glassmaking.

*“Ten years ago, I founded Lasvit holding the vision of a progressive company that would cherish the extraordinary craftsmanship of our ancestors and present innovative and cutting-edge ideas and inspirations,”* said Leon Jakimic, President and Founder of Lasvit. *“My goal was to establish a company that would become a key initiator of the rebirth of Bohemian glass production, spreading the fame and unique craftsmanship of Czech master glassmakers worldwide, while bringing beauty, happiness, story and a little piece of Bohemia to the customers all over the world. I’m proud of all the things Lasvit managed to achieve in a mere decade. These results represent true dedication and great creativity, brought together by our passion for glass.”*

# 10 YEARS OF LASVIT — A DECADE OF CRAFT, PASSION, INSPIRATION AND DEDICATION

Follow Lasvit at  
lasvit.com





